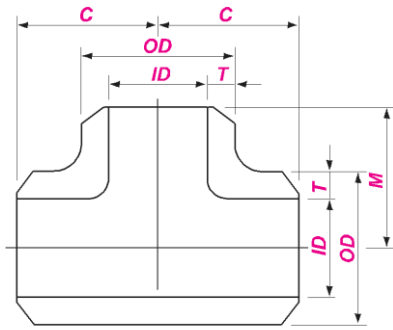
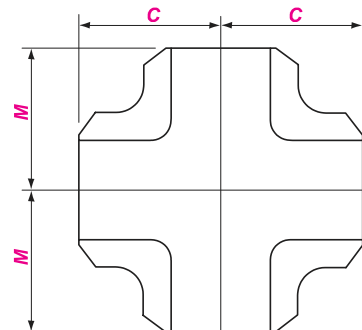


BUTT-WELDING TEES AND CROSSES



对焊 等径三通
BW Straight Tee



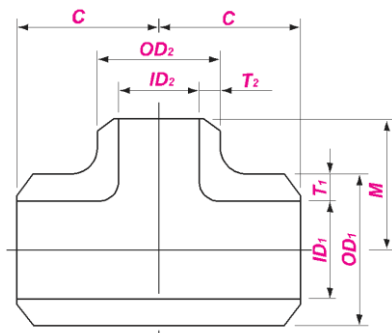
对焊等径四通
BW Straight Cross

GB/T 12459、GB/T 13401、ASME B16.9

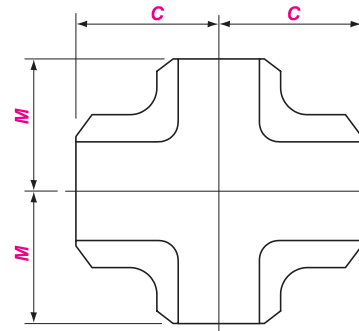
公称尺寸 Nominal Size		Outside Diameter at Bevel		中心至端面 Center to End	
DN	NPS	OD ₁	OD ₂	C	M
15	1/2	21.3			25
15 × 10	1/2 × 3/8	21.3	17.1	25	25
15 × 8	1/2 × 1/4	21.3	13.7		25
20	3/4	26.7			29
20 × 15	3/4 × 1/2	26.7	21.3	29	29
20 × 10	3/4 × 3/8	26.7	17.1		29
25	1	33.4			38
25 × 20	1 × 3/4	33.4	26.7	38	38
25 × 15	1 × 1/2	33.4	21.3		38
32	1 1/4	42.2			48
32 × 25	1 1/4 × 1	42.2	33.4	48	48
32 × 20	1 1/4 × 3/4	42.2	26.7		48
32 × 15	1 1/4 × 1/2	42.2	21.3		48
40	1 1/2	48.3			57
40 × 32	1 1/2 × 1 1/4	48.3	42.2		57
40 × 25	1 1/2 × 1	48.3	33.4	57	57
40 × 20	1 1/2 × 3/4	48.3	26.7		57
40 × 15	1 1/2 × 1/2	48.3	21.3		57
50	2	60.3			64
50 × 40	2 × 1 1/2	60.3	48.3		60
50 × 32	2 × 1 1/4	60.3	42.2	64	57
50 × 25	2 × 1	60.3	33.4		51
50 × 20	2 × 3/4	60.3	26.7		44
65	2 1/2	73.0			76
65 × 50	2 1/2 × 2	73.0	60.3		70
65 × 40	2 1/2 × 1 1/2	73.0	48.3	76	67
65 × 32	2 1/2 × 1 1/4	73.0	42.2		64
65 × 25	2 1/2 × 1	73.0	33.4		57
80	3	88.9			86
80 × 65	3 × 2 1/2	88.9	73.0		83
80 × 50	3 × 2	88.9	60.3	86	76
80 × 40	3 × 1 1/2	88.9	48.3		73
80 × 32	3 × 1 1/4	88.9	42.2		70
90	3 1/2	101.6			95
90 × 80	3 1/2 × 3	101.6	88.9		92
90 × 65	3 1/2 × 2 1/2	101.6	73.0	95	89
90 × 50	3 1/2 × 2	101.6	60.3		83
90 × 40	3 1/2 × 1 1/2	101.6	48.3		79
100	4	114.3			105
100 × 90	4 × 3 1/2	114.3	101.6		102
100 × 80	4 × 3	114.3	88.9		98
100 × 65	4 × 2 1/2	114.3	73.0	105	95
100 × 50	4 × 2	114.3	60.3		89
100 × 40	4 × 1 1/2	114.3	48.3		86



BUTT-WELDING TEES AND CROSSES



对焊异径三通
BW Reducing Tee



对焊异径四通
BW Reducing Cross

GB/T 12459、GB/T 13401、ASME B16.9

公称尺寸 Nominal Size		Outside Diameter at Bevel		中心至端面 Center to End	
DN	NPS	OD ₁	OD ₂	C	M
125	5	141.3		124	124
125 × 100	5 × 4	141.3	114.3		117
125 × 90	5 × 3½	141.3	101.6		114
125 × 80	5 × 3	141.3	88.9		111
125 × 65	5 × 2½	141.3	73.0		108
125 × 50	5 × 2	141.3	60.3		105
150	6	168.3		143	143
150 × 125	6 × 5	168.3	141.3		137
150 × 100	6 × 4	168.3	114.3		130
150 × 90	6 × 3½	168.3	101.6		127
150 × 80	6 × 3	168.3	88.9		124
150 × 65	6 × 2½	168.3	73.0		121
200	8	219.1		178	178
200 × 150	8 × 6	219.1	168.3		168
200 × 125	8 × 5	219.1	141.3		162
200 × 100	8 × 4	219.1	114.3		156
200 × 90	8 × 3½	219.1	101.6		152
250	10	273.0		216	216
250 × 200	10 × 8	273.0	219.1		203
250 × 150	10 × 6	273.0	168.3		194
250 × 125	10 × 5	273.0	141.3		191
250 × 100	10 × 4	273.0	114.3		184
300	12	323.8		254	254
300 × 250	12 × 10	323.8	273.0		241
300 × 200	12 × 8	323.8	219.1		229
300 × 150	12 × 6	323.8	168.3		219
300 × 125	12 × 5	323.8	141.3		216
350	14	355.6		279	279
350 × 300	14 × 12	355.6	323.8		270
350 × 250	14 × 10	355.6	273.0		257
350 × 200	14 × 8	355.6	219.1		248
350 × 150	14 × 6	355.6	168.3		238
400	16	406.4		305	305
400 × 350	16 × 14	406.4	355.6		305
400 × 300	16 × 12	406.4	323.8		295
400 × 250	16 × 10	406.4	273.0		283
400 × 200	16 × 8	406.4	219.1		273
400 × 150	16 × 6	406.4	168.3		264

BUTT-WELDING TEES AND CROSSES



公称尺寸 Nominal Size		Outside Diameter at Bevel		中心至端面 Center to End	
DN	NPS	OD ₁	OD ₂	C	M
450	18	457.0		343	343
450 × 400	18 × 16	457.0	406.4		330
450 × 350	18 × 14	457.0	355.6		330
450 × 300	18 × 12	457.0	323.8		321
450 × 250	18 × 10	457.0	273.0		308
450 × 200	18 × 8	457.0	219.1		298
500	20	508.0			381
500 × 450	20 × 18	508.0	457.0	368	
500 × 400	20 × 16	508.0	406.4	356	
500 × 350	20 × 14	508.0	355.6	356	
500 × 300	20 × 12	508.0	323.8	346	
500 × 250	20 × 10	508.0	273.0	333	
500 × 200	20 × 8	508.0	219.1	324	
550	22	559.0		419	419
550 × 500	22 × 20	559.0	508.0		406
550 × 450	22 × 18	559.0	457.0		394
550 × 400	22 × 16	559.0	406.4		381
550 × 350	22 × 14	559.0	355.6		381
550 × 300	22 × 12	559.0	323.8		371
550 × 250	22 × 10	559.0	273.0		359
600	24	610.0		432	432
600 × 550	24 × 22	610.0	559.0		432
600 × 500	24 × 20	610.0	508.0		432
600 × 450	24 × 18	610.0	457.0		419
600 × 400	24 × 16	610.0	406.4		406
600 × 350	24 × 14	610.0	355.6		406
600 × 300	24 × 12	610.0	323.8		397
600 × 250	24 × 10	610.0	273.0	384	
650	26	660.0		495	495
650 × 600	26 × 24	660.0	610.0		483
650 × 550	26 × 22	660.0	559.0		470
650 × 500	26 × 20	660.0	508.0		457
650 × 450	26 × 18	660.0	457.0		444
650 × 400	26 × 16	660.0	406.4		432
650 × 350	26 × 14	660.0	355.6		432
650 × 300	26 × 12	660.0	323.8	422	
700	28	711.0		521	521
700 × 650	28 × 26	711.0	660.0		521
700 × 600	28 × 24	711.0	610.0		508
700 × 550	28 × 22	711.0	559.0		495
700 × 500	28 × 20	711.0	508.0		483
700 × 450	28 × 18	711.0	457.0		470
700 × 400	28 × 16	711.0	406.4		457
700 × 350	28 × 14	711.0	355.6	457	
700 × 300	28 × 12	711.0	323.8	448	
750	30	762.0		559	559
750 × 700	30 × 28	762.0	711.0		546
750 × 650	30 × 26	762.0	660.0		546
750 × 600	30 × 24	762.0	610.0		533
750 × 550	30 × 22	762.0	559.0		521
750 × 500	30 × 20	762.0	508.0		508
750 × 450	30 × 18	762.0	457.0		495
750 × 400	30 × 16	762.0	406.4		483
750 × 350	30 × 14	762.0	355.6		483
750 × 300	30 × 12	762.0	323.8		473
750 × 250	30 × 10	762.0	273.0		460



BUTT-WELDING TEES AND CROSSES

公称尺寸 Nominal Size		Outside Diameter at Bevel		中心至端面 Center to End	
DN	NPS	OD ₁	OD ₂	C	M
800	32	813.0		597	597
800 × 750	32 × 30	813.0	762.0		584
800 × 700	32 × 28	813.0	711.0		572
800 × 650	32 × 26	813.0	660.0		572
800 × 600	32 × 24	813.0	610.0		559
800 × 550	32 × 22	813.0	559.0		546
800 × 500	32 × 20	813.0	508.0		533
800 × 450	32 × 18	813.0	457.0		521
800 × 400	32 × 16	813.0	406.4		508
800 × 350	32 × 14	813.0	355.6		508
850	34	864.0		635	635
850 × 800	34 × 32	864.0	813.0		622
850 × 750	34 × 30	864.0	762.0		610
850 × 700	34 × 28	864.0	711.0		597
850 × 650	34 × 26	864.0	660.0		597
850 × 600	34 × 24	864.0	610.0		584
850 × 550	34 × 22	864.0	559.0		572
850 × 500	34 × 20	864.0	508.0		559
850 × 450	34 × 18	864.0	457.0		546
850 × 400	34 × 16	864.0	406.4		533
900	36	914.0		673	673
900 × 850	36 × 34	914.0	864.0		660
900 × 800	36 × 32	914.0	813.0		648
900 × 750	36 × 30	914.0	762.0		635
900 × 700	36 × 28	914.0	711.0		622
900 × 650	36 × 26	914.0	660.0		622
900 × 600	36 × 24	914.0	610.0		610
900 × 550	36 × 22	914.0	559.0		597
900 × 500	36 × 20	914.0	508.0		584
900 × 450	36 × 18	914.0	457.0		572
900 × 400	36 × 16	914.0	406.4	559	
950	38	965.0		711	711
950 × 900	38 × 36	965.0	914.0		711
950 × 850	38 × 34	965.0	864.0		698
950 × 800	38 × 32	965.0	813.0		686
950 × 750	38 × 30	965.0	762.0		673
950 × 700	38 × 28	965.0	711.0		648
950 × 650	38 × 26	965.0	660.0		648
950 × 600	38 × 24	965.0	610.0		635
950 × 550	38 × 22	965.0	559.0		622
950 × 500	38 × 20	965.0	508.0		610
950 × 450	38 × 18	965.0	457.0	597	
1000	40	1016.0		749	749
1000 × 950	40 × 38	1016.0	965.0		749
1000 × 900	40 × 36	1016.0	914.0		737
1000 × 850	40 × 34	1016.0	864.0		724
1000 × 800	40 × 32	1016.0	813.0		711
1000 × 750	40 × 30	1016.0	762.0		698
1000 × 700	40 × 28	1016.0	711.0		673
1000 × 650	40 × 26	1016.0	660.0		673
1000 × 600	40 × 24	1016.0	610.0		660
1000 × 550	40 × 22	1016.0	559.0		648
1000 × 500	40 × 20	1016.0	508.0	635	
1000 × 450	40 × 18	1016.0	457.0	622	

BUTT-WELDING TEES AND CROSSES



公称尺寸 Nominal Size		Outside Diameter at Bevel		中心至端面 Center to End	
DN	NPS	OD ₁	OD ₂	C	M
1050	42	1067.0		762	711
1050 × 1000	42 × 40	1067.0	1016.0		711
1050 × 950	42 × 38	1067.0	965.0		711
1050 × 900	42 × 36	1067.0	914.0		711
1050 × 850	42 × 34	1067.0	864.0		711
1050 × 800	42 × 32	1067.0	813.0		711
1050 × 750	42 × 30	1067.0	762.0		698
1050 × 700	42 × 28	1067.0	711.0		698
1050 × 650	42 × 26	1067.0	660.0		660
1050 × 600	42 × 24	1067.0	610.0		660
1050 × 550	42 × 22	1067.0	559.0		660
1050 × 500	42 × 20	1067.0	508.0		648
1050 × 450	42 × 18	1067.0	457.0		635
1050 × 400	42 × 16	1067.0	406.4		
1100	44	1118.0		813	762
1100 × 1050	44 × 42	1118.0	1067.0		762
1100 × 1000	44 × 40	1118.0	1016.0		749
1100 × 950	44 × 38	1118.0	965.0		737
1100 × 900	44 × 36	1118.0	914.0		724
1100 × 850	44 × 34	1118.0	864.0		724
1100 × 800	44 × 32	1118.0	813.0		711
1100 × 750	44 × 30	1118.0	762.0		711
1100 × 700	44 × 28	1118.0	711.0		698
1100 × 650	44 × 26	1118.0	660.0		698
1100 × 600	44 × 24	1118.0	610.0		698
1100 × 550	44 × 22	1118.0	559.0		686
1100 × 500	44 × 20	1118.0	508.0		686
1150	46	1168.0			851
1150 × 1100	46 × 44	1168.0	1118.0	800	
1150 × 1050	46 × 42	1168.0	1067.0	787	
1150 × 1000	46 × 40	1168.0	1016.0	775	
1150 × 950	46 × 38	1168.0	965.0	762	
1150 × 900	46 × 36	1168.0	914.0	762	
1150 × 850	46 × 34	1168.0	864.0	749	
1150 × 800	46 × 32	1168.0	813.0	749	
1150 × 750	46 × 30	1168.0	762.0	737	
1150 × 700	46 × 28	1168.0	711.0	737	
1150 × 650	46 × 26	1168.0	660.0	737	
1150 × 600	46 × 24	1168.0	610.0	724	
1150 × 550	46 × 22	1168.0	559.0	724	
1200	48	1219.0		889	
1200 × 1150	48 × 46	1219.0	1168.0		838
1200 × 1100	48 × 44	1219.0	1118.0		838
1200 × 1050	48 × 42	1219.0	1067.0		813
1200 × 1000	48 × 40	1219.0	1016.0		813
1200 × 950	48 × 38	1219.0	965.0		813
1200 × 900	48 × 36	1219.0	914.0		787
1200 × 850	48 × 34	1219.0	864.0		787
1200 × 800	48 × 32	1219.0	813.0		787
1200 × 750	48 × 30	1219.0	762.0		762
1200 × 700	48 × 28	1219.0	711.0		762
1200 × 650	48 × 26	1219.0	660.0		762
1200 × 600	48 × 24	1219.0	610.0		737
1200 × 550	48 × 22	1219.0	559.0		737



BUTT-WELDING TEES AND CROSSES

对焊三通、四通

BW TEES & CROSSES

公称尺寸 Nominal Size		Outside Diameter at Bevel		中心至端面 Center to End	
DN	NPS	OD ₁	OD ₂	C	M
1300	52	1321.0		965	914
1300 × 1200	52 × 48	1321.0	1219.0		864
1300 × 1100	52 × 44	1321.0	1118.0		813
1300 × 1000	52 × 40	1321.0	1016.0		762
1400	56	1422.0		1041	965
1400 × 1300	56 × 52	1422.0	1321.0		914
1400 × 1200	56 × 48	1422.0	1219.0		864
1400 × 1100	56 × 44	1422.0	1118.0		813
1500	60	1524.0		1118	1016
1500 × 1400	60 × 56	1524.0	1422.0		965
1500 × 1300	60 × 52	1524.0	1321.0		914
1500 × 1200	60 × 48	1524.0	1219.0		864
1600	64	1626.0		1194	1092
1600 × 1500	64 × 60	1626.0	1524.0		1067
1600 × 1400	64 × 56	1626.0	1422.0		1016
1600 × 1300	64 × 52	1626.0	1321.0		965
1600 × 1200	64 × 48	1626.0	1219.0		914
1700	68	1727.0		1270	1168
1700 × 1600	68 × 64	1727.0	1626.0		1143
1700 × 1500	68 × 60	1727.0	1524.0		1118
1700 × 1400	68 × 56	1727.0	1422.0		1067
1700 × 1300	68 × 52	1727.0	1321.0		1016
1700 × 1200	68 × 48	1727.0	1219.0	965	
1800	72	1829.0		1320	1245
1800 × 1700	72 × 68	1829.0	1727.0		1219
1800 × 1600	72 × 64	1829.0	1626.0		1194
1800 × 1500	72 × 60	1829.0	1524.0		1168
1800 × 1400	72 × 56	1829.0	1422.0		1118
1800 × 1300	72 × 52	1829.0	1321.0		1067
1800 × 1200	72 × 48	1829.0	1219.0	1016	
1900	76	1930.0		1422	1320
1900 × 1800	76 × 72	1930.0	1829.0		1295
1900 × 1700	76 × 68	1930.0	1727.0		1270
1900 × 1600	76 × 64	1930.0	1626.0		1245
1900 × 1500	76 × 60	1930.0	1524.0		1219
1900 × 1400	76 × 56	1930.0	1422.0		1168
1900 × 1300	76 × 52	1930.0	1321.0		1118
1900 × 1200	76 × 48	1930.0	1219.0	1067	
2000	80	2032.0		1499	1397
2000 × 1900	80 × 76	2032.0	1930.0		1372
2000 × 1800	80 × 72	2032.0	1829.0		1346
2000 × 1700	80 × 68	2032.0	1727.0		1321
2000 × 1600	80 × 64	2032.0	1626.0		1295
2000 × 1500	80 × 60	2032.0	1524.0		1270
2000 × 1400	80 × 56	2032.0	1422.0		1219
2000 × 1300	80 × 52	2032.0	1321.0		1168
2000 × 1200	80 × 48	2032.0	1219.0	1118	

注释:

- 除上述标准外, 还可按 GB/T 10752、SH 3408、SH 3409、HG/T 21635、HG/T 21631、SY/T 0510、DL/T 695、EN 10253 等标准制造。
- 对于 ≥ DN 650 (NPS 26) 的等径三通、四通和 ≥ DN 350 (NPS 14) 的异径三通、四通, 推荐但不一定要采用出口尺寸 M。
- 更大规格的三通、四通, 按采购方与制造商协商的尺寸制造, 或按制造商的尺寸供货。

Notes:

- Besides the above mentioned standards, the standards of GB/T 10752、SH 3408、SH 3409、HG/T 21635、HG/T 21631、SY/T 0510、DL/T 695、EN 10253 etc. are also applied.
- For the straight tees and crosses with DN ≥ 650 (NPS 26) and the reducing tees and crosses with DN ≥ 350 (NPS 14), the outlet sizes are recommended to use (that mean the other sizes may be applied).
- For the tees and crosses with the sizes larger than that listed in the above table, they will be supplied subject to the sized agreed by purchaser and manufacturer or according to manufacturer's size.